



A SMALL SOLUTION FOR INSTANT RESULTS

Navina™ Mini can ease your child's bowel issues.
An intuitive solution to aid constipation and soiling.

Navina™ Mini

TAKE CONTROL WITH NAVINA MINI

Living with bowel problems is challenging for your child and the entire family.

As a caregiver, you've likely been on a prolonged journey, trying various approaches like dietary adjustments and stool changing medications such as laxatives or stool softeners, all in the hope of finding effective solutions.

These challenges are more common than you think but aren't often talked about. Fortunately, there are solutions, like the user-friendly Navina Mini, to support your child in reestablishing a healthy toilet routine.

A SMALL SOLUTION FOR INSTANT RESULTS

Navina Mini is a discreet and intuitive low-volume irrigation solution that can help with symptoms such as incomplete emptying or soiling.

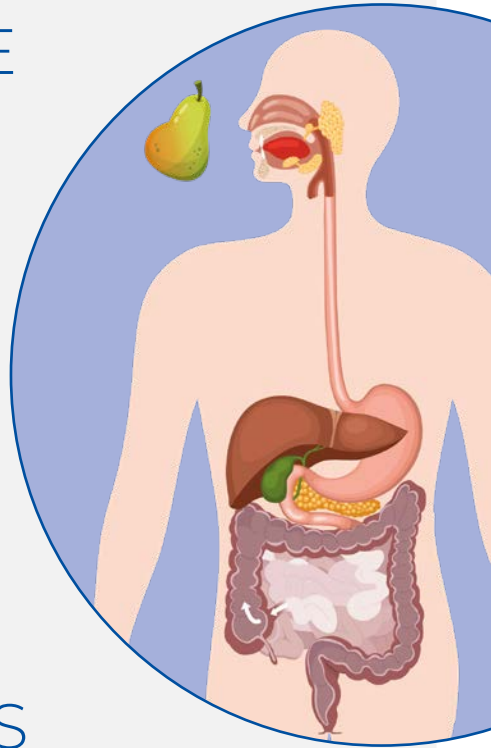
With a gentle flush of water, it clears the lower part of the bowel, providing immediate relief and preventing leakage.



HOW DOES THE BOWEL WORK?

Imagine the tummy is like a big machine.

1. After you eat, food is broken down in the stomach and enters the small intestine, which absorbs vital nutrients.
2. Then, the large bowel absorbs salts and water and makes poop out of the stuff the body doesn't need.
3. The poop then travels to the end of your bowel and gets stored in the part called the rectum.
4. The poop waits in the rectum until a message is sent to your brain and tells you it's time to use the toilet.



WHAT HAPPENS WHEN IT DOESN'T WORK?

Sometimes this machine doesn't work as it should and that can cause problems.

If your child has bowel issues they may experience constipation, pain, bloating, and soiling, making daily life a struggle. Bowel leakage is also common and can lead to embarrassment and insecurity.

As a caregiver, you spend significant time managing these challenges, including meal times, restroom visits, and constant cleaning after accidents.

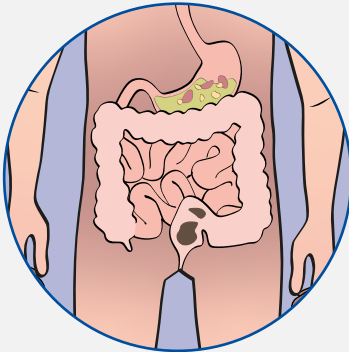
This leaves less time for play and social activities.

HOW BOWEL IRRIGATION CAN HELP

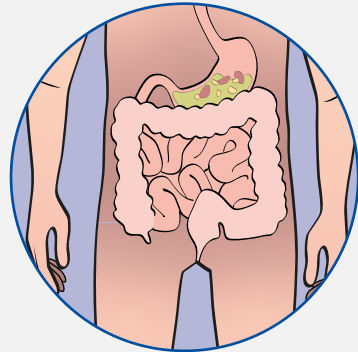
Low-volume bowel irrigation effectively cleans the lower bowel using a rectal cone to introduce water and wash out poop.

It's drug-free and provides an alternative to medications and dietary restrictions. This method prevents accidents and offers control over when and where your child can have bowel movements.

Before irrigation:



After irrigation:



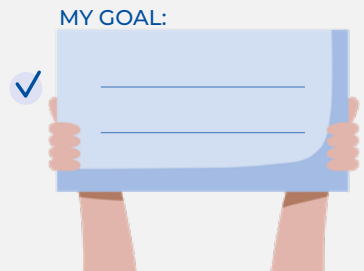
TRAINING IS KEY

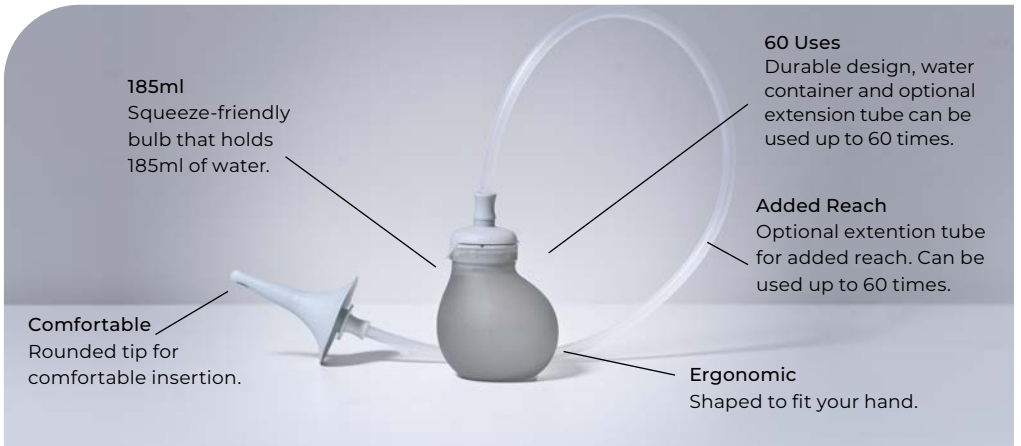
We're all unique, and so are our bowels. That's why it's crucial to customize an irrigation program for your child. Here are some tips to help you succeed:

- Ensure proper training is given when starting bowel irrigation, with guidance from a healthcare provider.
- Involve your child in the process by allowing them to practice with the equipment on a stuffed animal or doll, making it less intimidating.
- Set achievable goals to motivate your child to continue with irrigation, even if they're initially hesitant.

✓ Going to school a full day without having an accident

✓ Going to the swimming pool





A SMALL SOLUTION FOR INSTANT RESULTS

Bowel irrigation shouldn't need to be complicated or feel scary.

Navina Mini is a discreet and intuitive low-volume irrigation solution that can help with symptoms such as constipation or soiling. With a gentle flush of water, it clears the lower part of the bowel, providing relief and preventing leakage.



BECOME A FLUSH HERO!

When starting bowel irrigation, it can take a bit of time to get used to. In order to make the procedure a little more fun, we developed the mobile game Navina Flush Hero.

Practice spraying the poop-monsters and empty the bowel before you run out of water!



NAVINA MINI AND ME

In this short story, Robin will share how he uses Navina Mini and how it helps his tummy feel better.



Hello, my name is Robin! I used to be just like you. I had problems with my tummy for a long time...



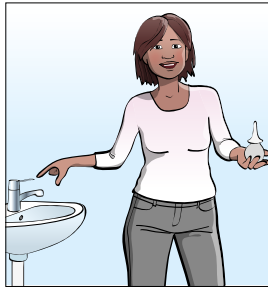
I tried lots of things, different foods and medicines, but nothing made me feel better.



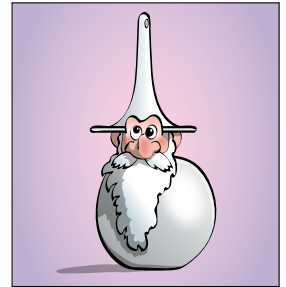
It made me feel sad a lot. I felt scared to go out to play in case I had an accident and my tummy hurt all the time.



One day, my doctor told my mum that maybe I could try something called bowel irrigation.



She said that it only uses water and that it wouldn't hurt.



At first, I wasn't sure. It looked a bit funny, almost like a garden gnome...



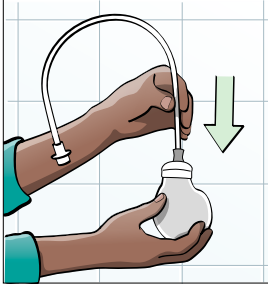
But after talking to my mum and the doctor, I decided we could try.



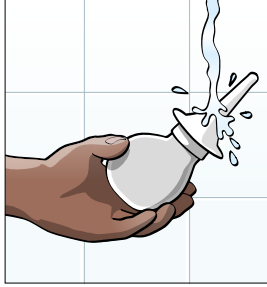
Did you know, that before you fill the water up, if you squeeze it, it sounds like a dog toy!



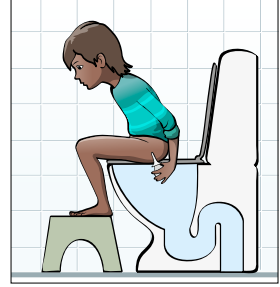
...this is not for you Toby!



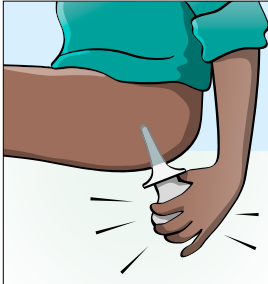
This is how it works! If using, begin by assembling the extension tube with the water container, its helpful if you need help from your parent!



Then, mum assembles the cone to the water container (or tube) and activates it with water - it's really slippery!



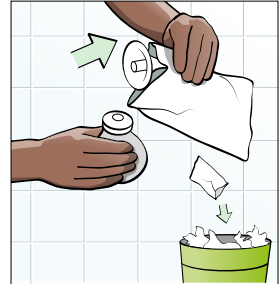
I get on the toilet and insert the cone into my bottom. The first times, my mum helped me so I did it right.



Once in place, I squeeze the water container to push in the water. Then I remove it.



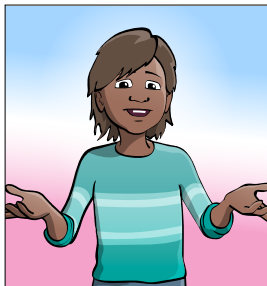
Then I wait for the poop to come out.



My mum usually helps me clean up after, but when I'm older I will do it all by myself I think.



I always finish by washing my hands with soap and water.



And that's it! Easy! Now I know I have emptied out the poop, I don't have tummy pains anymore...



...and I don't have to worry about having accidents in my pants!

Navina Mini

Intended use

Navina Mini is intended for trans-anal irrigation by instilling a low volume of water into rectum through a single use rectal cone.



Manufacturer:
Wellspect HealthCare,
Aminogatan 1, P.O. Box 14,
SE-431 21 Mölndal, Sweden.
Phone: +46 31 376 40 00.
www.wellspect.com

Indications

Navina Mini is indicated for adults, adolescents and children from 3 years who suffer from incomplete bowel emptying and/or fecal incontinence.



Contraindications

- Known anal or colorectal stenosis
- Active inflammatory bowel disease
- Acute diverticulitis and diverticular abscess
- Colorectal cancer
- Ischemic colitis
- You are within three months of anal or colorectal surgery

As the list may not be exhaustive, healthcare professionals will always consider individual user factors as well. Before use see Instructions for Use.

Reference	Type	Specification
6931000	Navina Mini Start Set	1 water container, 5 rectal cones, 1 extension tube
6930700	Navina Mini Set	1 water container, 30 rectal cones
6930800	Navina Mini Extension Set	1 water container, 30 rectal cones, 1 extension tube
6930900	Navina Mini Refill Set	30 rectal cones

At Wellspect we develop innovative continence care solutions that improve quality of life for people with bladder and bowel problems. We inspire our users to build self-confidence and independence as well as good health and well-being. We have been leading the industry for over 40 years with our product brands LoFric® and Navina™. We always aim to minimize the environmental impact of our products and passionately strive to become climate neutral. We work together with users and healthcare professionals to improve clinical outcome in a sustainable way, now and for the future.

Wellspect. A Real Difference.

For more information about our products and services, please visit Wellspect.com. Join the conversation on LinkedIn, Twitter, Facebook and Instagram.

[wellspect.com](https://www.wellspect.com)

